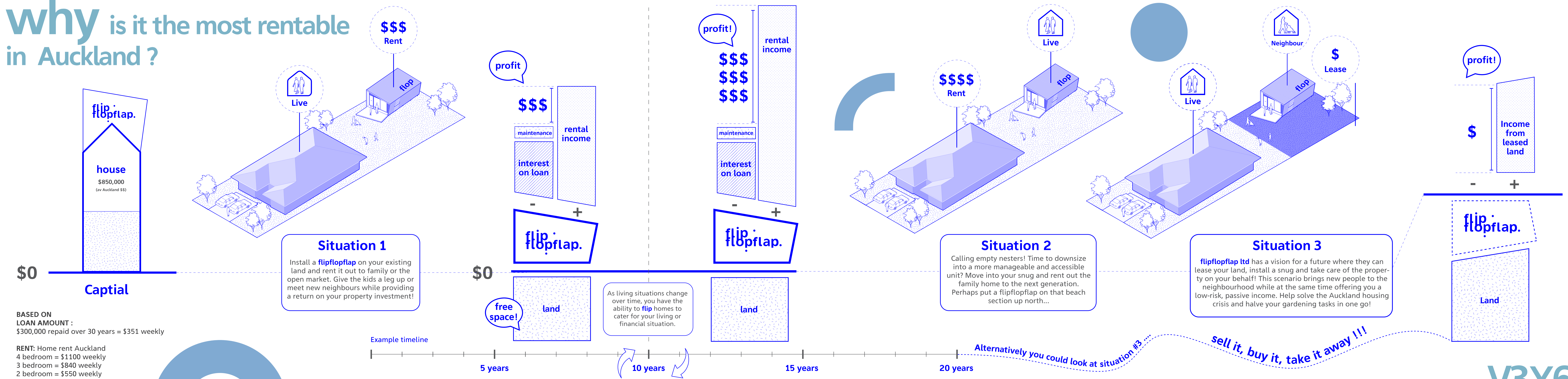




why is it the most rentable in Auckland?



Some features of the flipflopflap series

- Fits on the smallest of sections.
- Low waste timber panels used as structure and linings.
- Built offsite which results fast construction and low site disturbance.
- Fits in the transport envelope.
- Touches the ground lightly with slender screw piles.
- Can be removed and relocated, leaving no trace.
- Low embodied energy.
- Low maintenance.
- High performance envelope.
- Impact resistant and durable interior panels.

Interior and exterior colours fully customisable. Metal shell available in any standard profiled steel colour, complemented by your favourite natural material or colour.



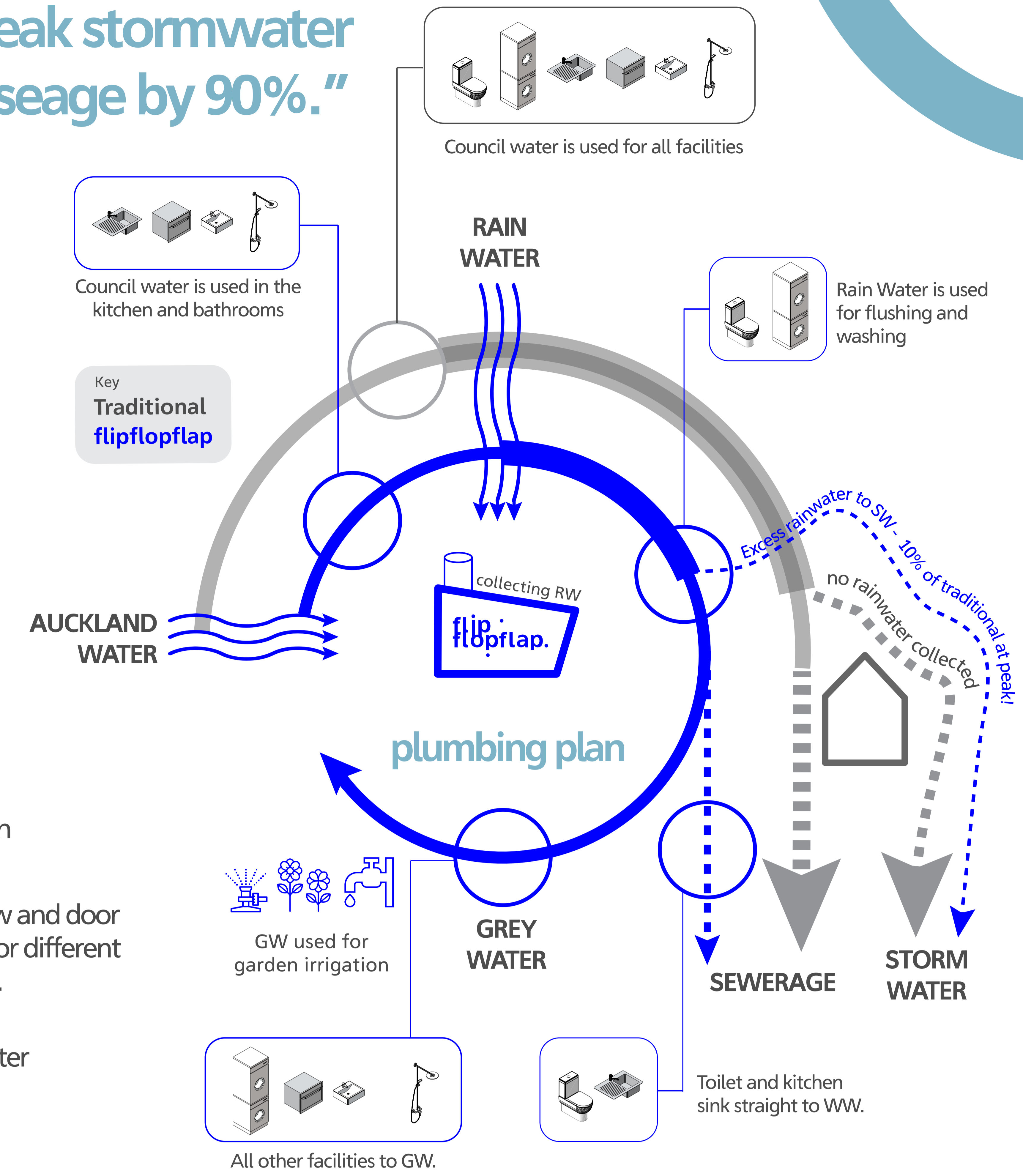
Flop and Flop 2.0 designed with Lifemark lifetime design in mind.

what makes it different?



"Reduces peak stormwater usage by 90%."

- Lifetime design accessibility
- Multiple window and door configurations for different site orientations.
- Gas instant hot water
- Rain water tank
- PV solar energy generation (optional)
- Designed with Lifemark and Homestar in mind.



"Uses 18% of average Auckland household water."

your options

and the fully customisable shell and interior fitout means no two snugs are the same.

1. Living | 2. Kitchen | 3. Bedroom | 4. Bathroom | 5. Toilet | 6. Laundry | 7. Storage | 8. Flex Space

flip mini 35m²

I can fit on the smallest and trickiest of sites.

Example 1: Profiled Steel in Pioneer Red, with painted accent - 'Midwinter Mist'.

1 bed + 1 bath
L = 9.15m
W = 4m
H = 4m

Ground Floor

flip 65m²

With three flex spaces, I am spacious and versatile!

Example 2: Profiled Steel in Ebony, with NZ grown heat treated Douglas Fir accent.

2.5 bed + 1 bath
L = 9.15m
W = 4m
H = 6m

Ground Floor

First Floor

flop 45m²

I am a fully accessible and spacious one-bed snug.

Example 3: Profiled Steel in Cloud with painted accent - 'Paradise'.

1 bed + 1 bath
L = 8.7m
W = 5.2m
H = 4m

Ground Floor

flop maxi 65m²

With two generous bedrooms, I am the largest and fully accessible home.

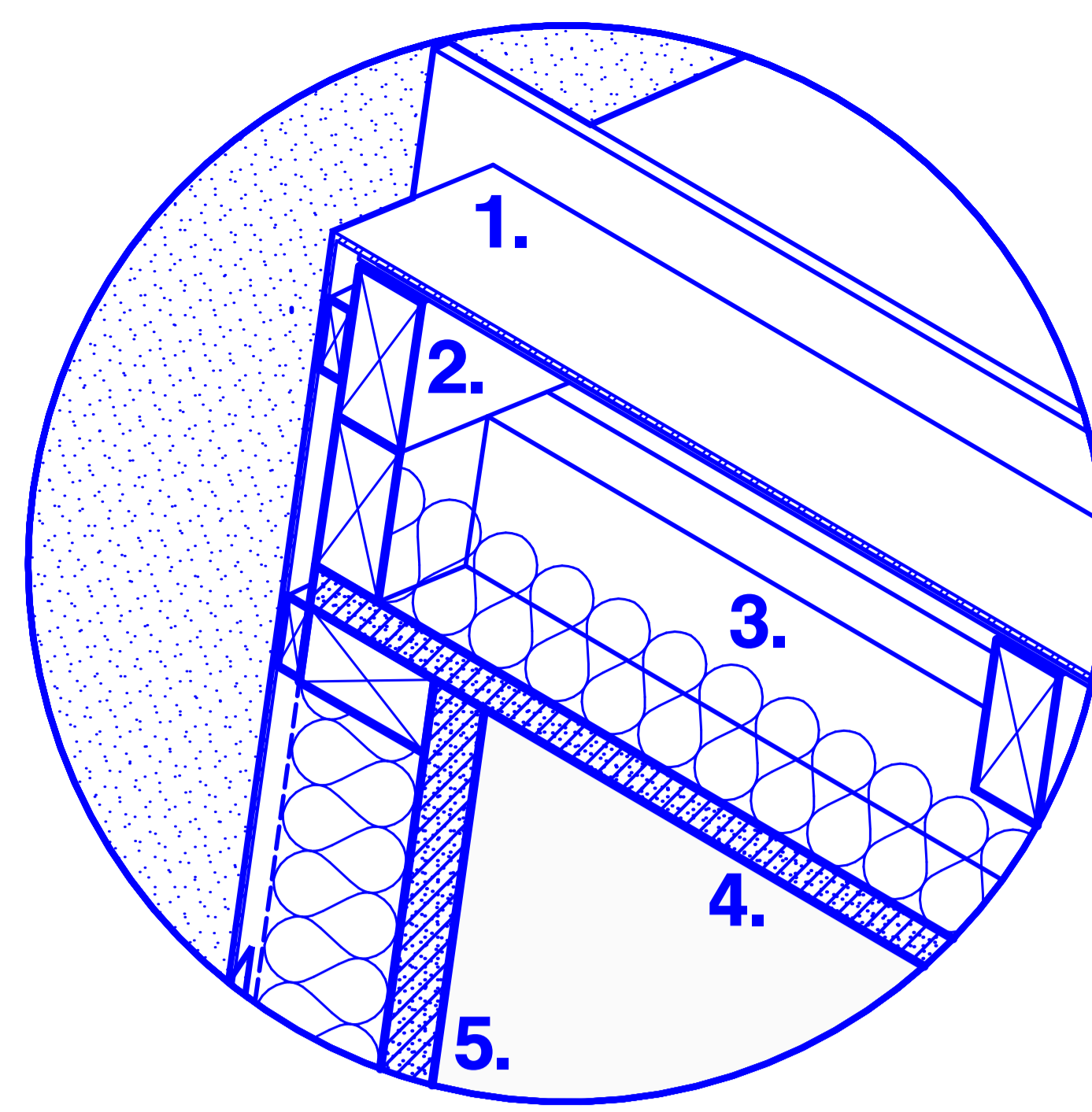
Example 4: Profiled Steel in Ebony, with silvered NZ grown heat treated pine.

2.5 bed + 1 bath
L = 12.4m
W = 5.2m
H = 4m

Ground Floor

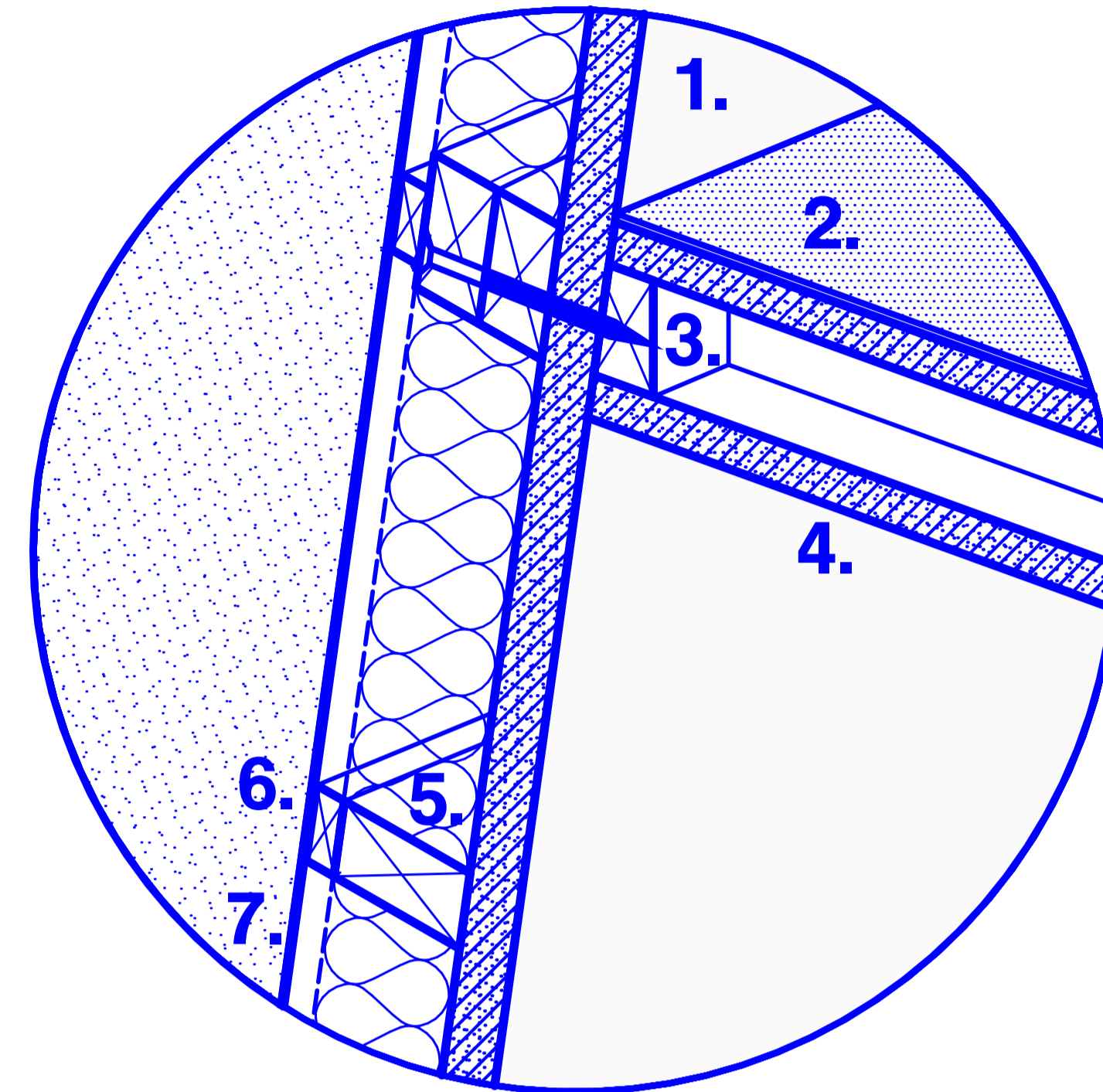
SnugSkin Roof Panel

1. Metal standing seam roof cladding
2. 90 x 45 SG8 purlins
3. 90 x 45 SG8 rafters @ 450 crs
4. 18mm engineered wood ceiling panel
5. 36mm engineered wood wall panel



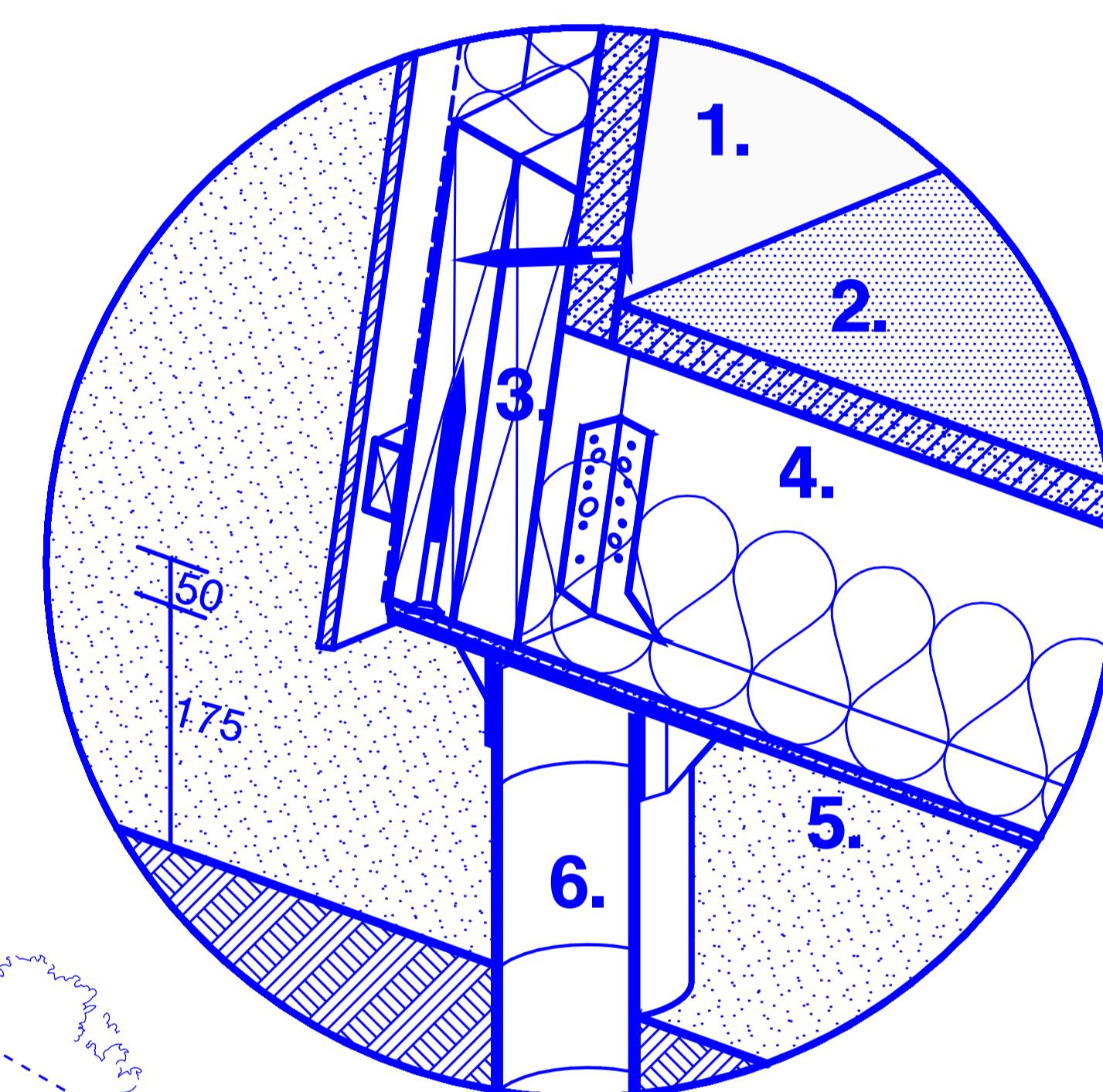
SnugSkin Interfloor Panel

1. 36mm engineered wood wall panel
2. 18mm engineered wood floor panel
3. 90 x 45 SG8 joists @ 450 crs
4. 18mm engineered wood floor panel
5. 90 x 45 horizontal timber waling
6. 20mm nominal cavity batten
7. Metal standing seam wall cladding

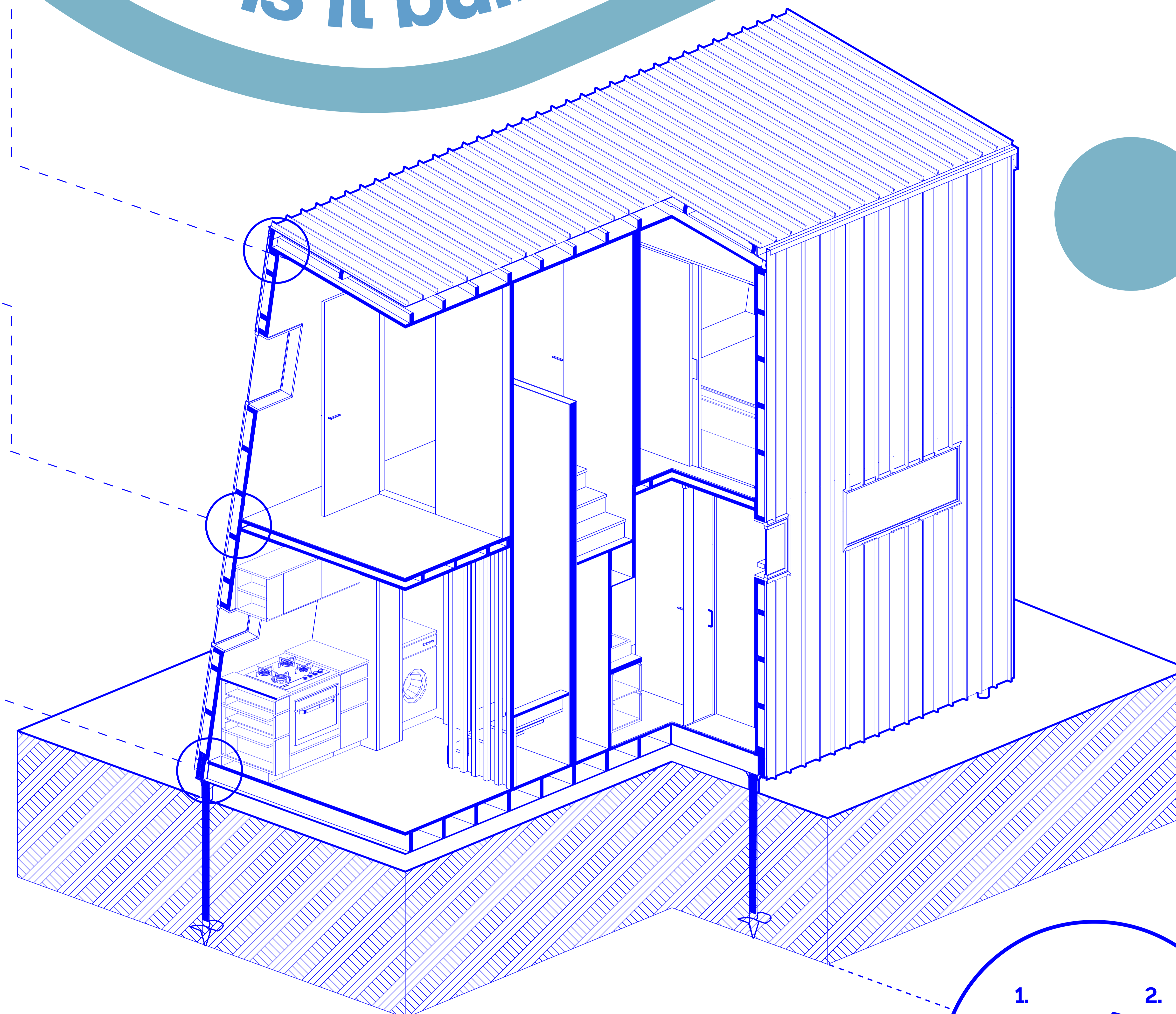


SnugSkin Floor Panel

1. 36mm engineered wood wall panel
2. 18mm engineered wood floor panel
3. 2/290 x 45 SG8 bearers
4. 190 x 45 SG8 H1.2 joists @ 450 crs
5. 7mm plywood lining
6. Krinner screw pile

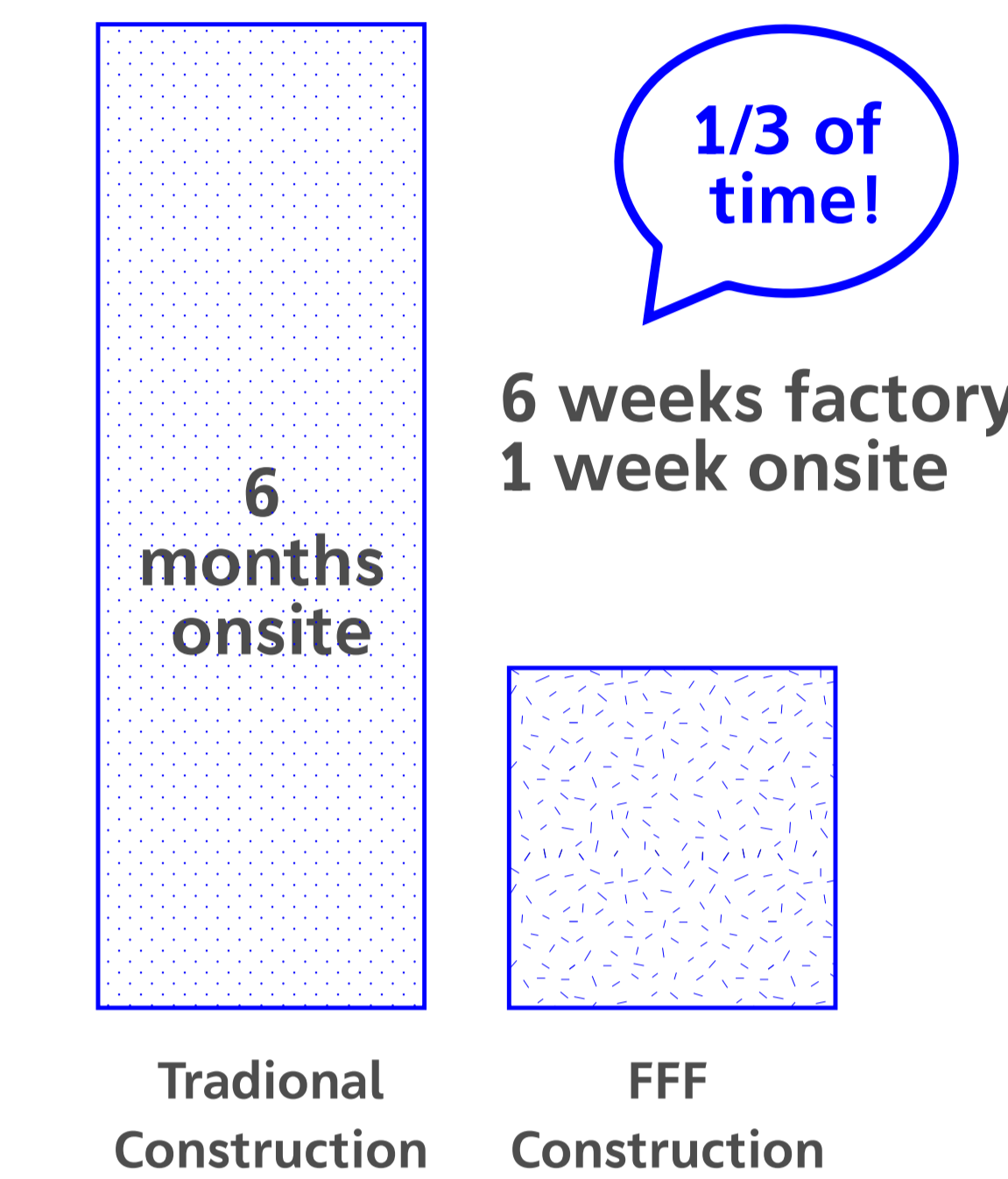
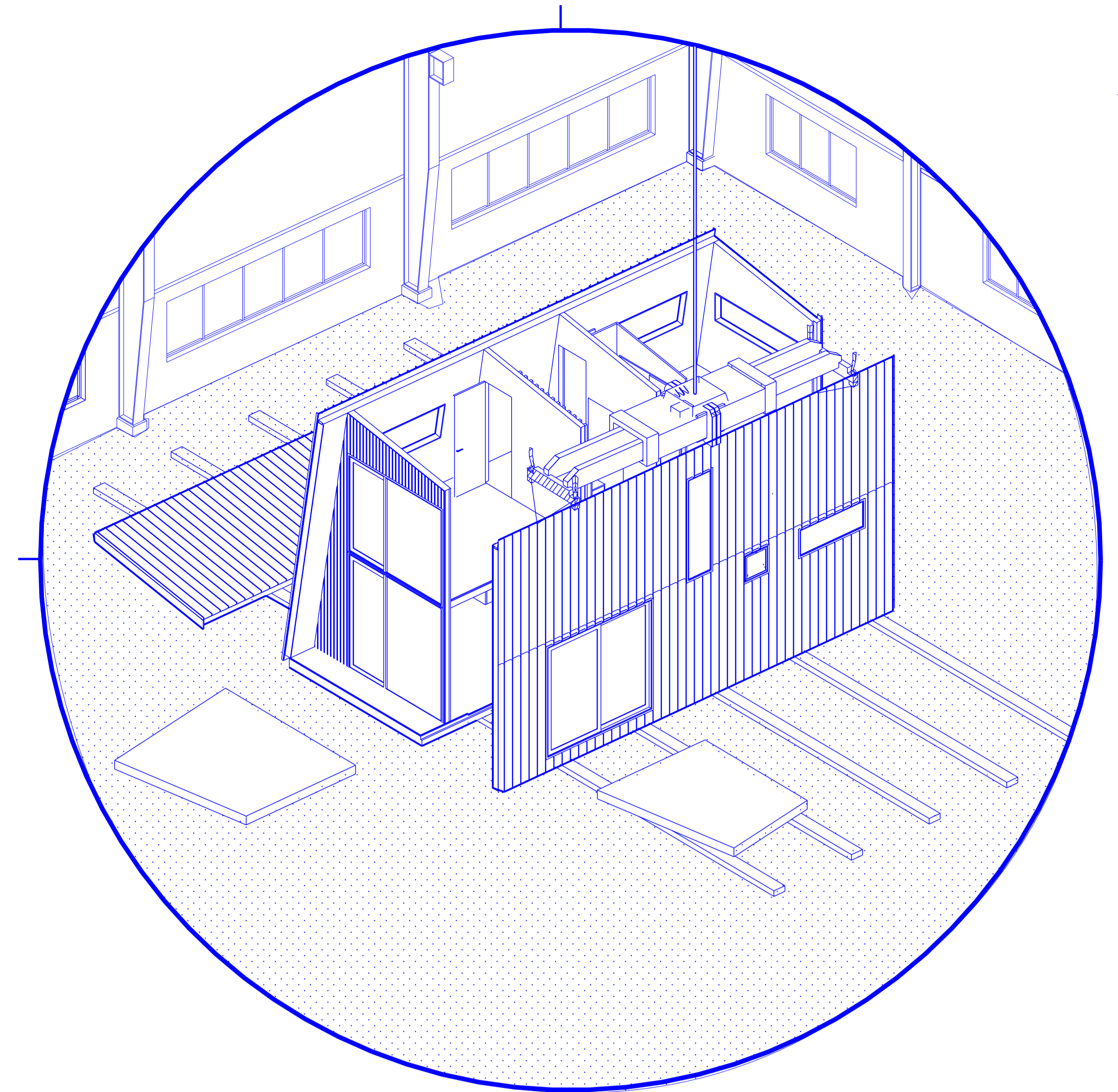


how is it built? the technical stuff



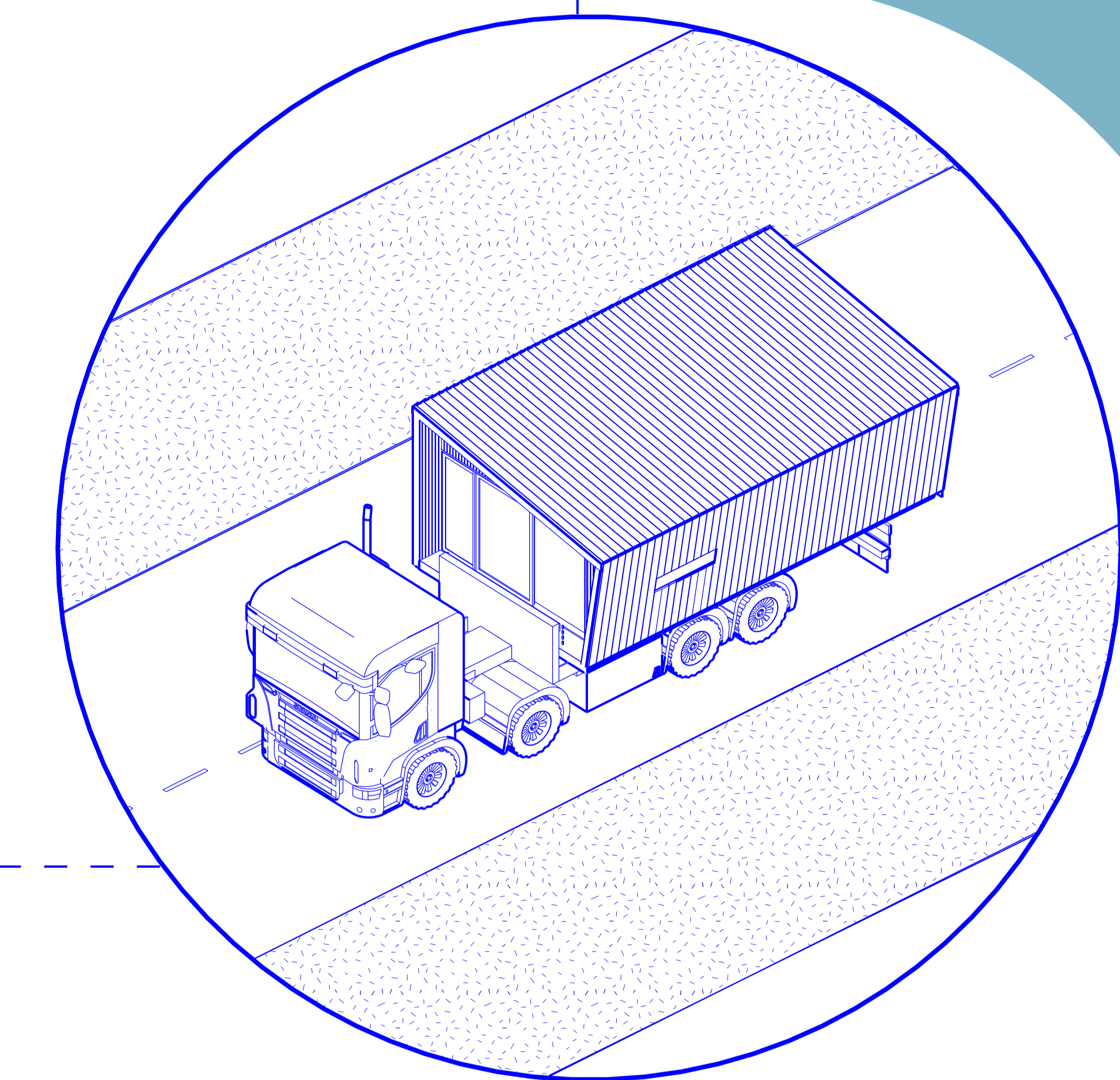
Construction

Construction happens offsite in a factory. Prefabrication ensures quality, safety, speed and reduced waste.



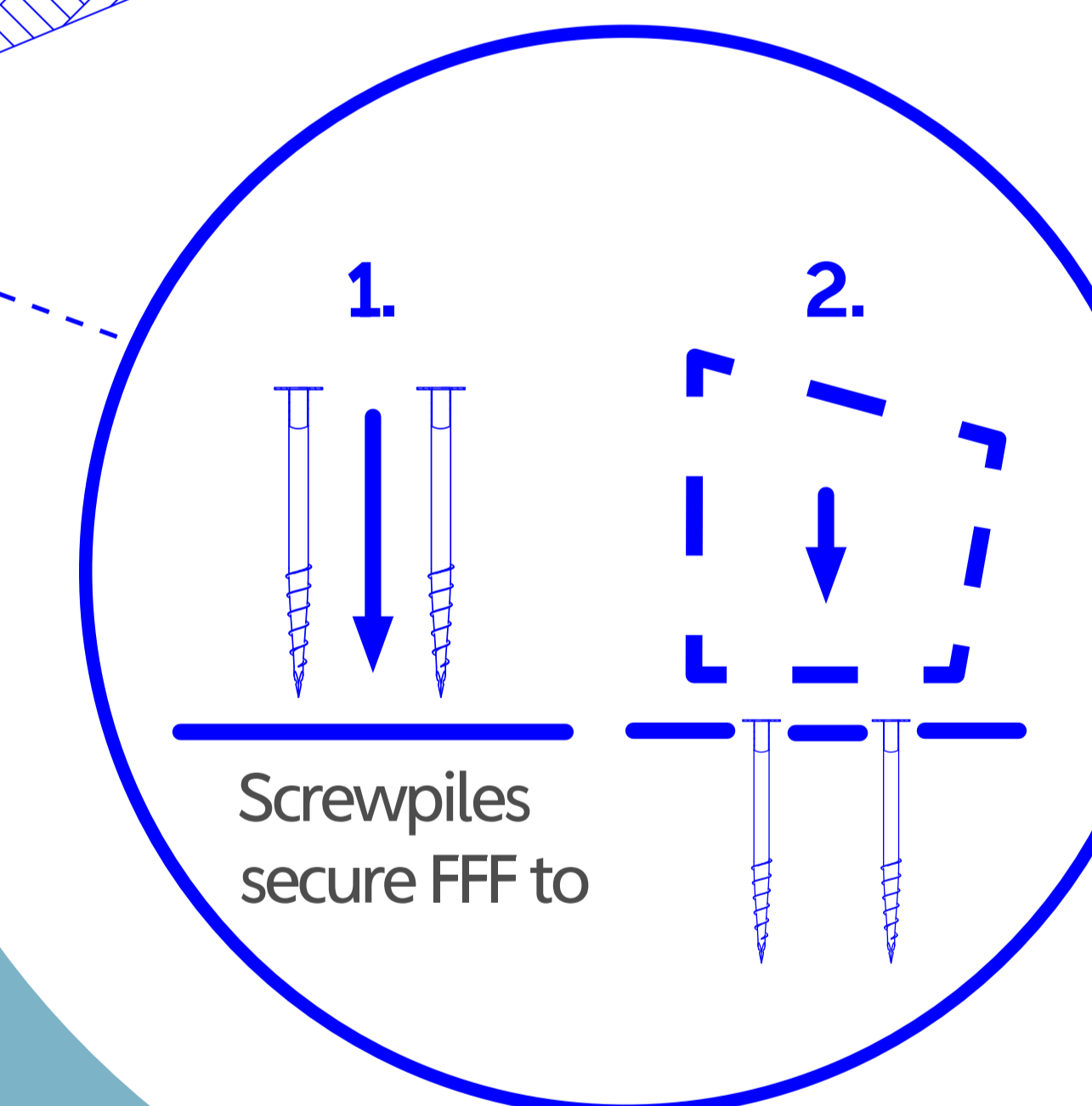
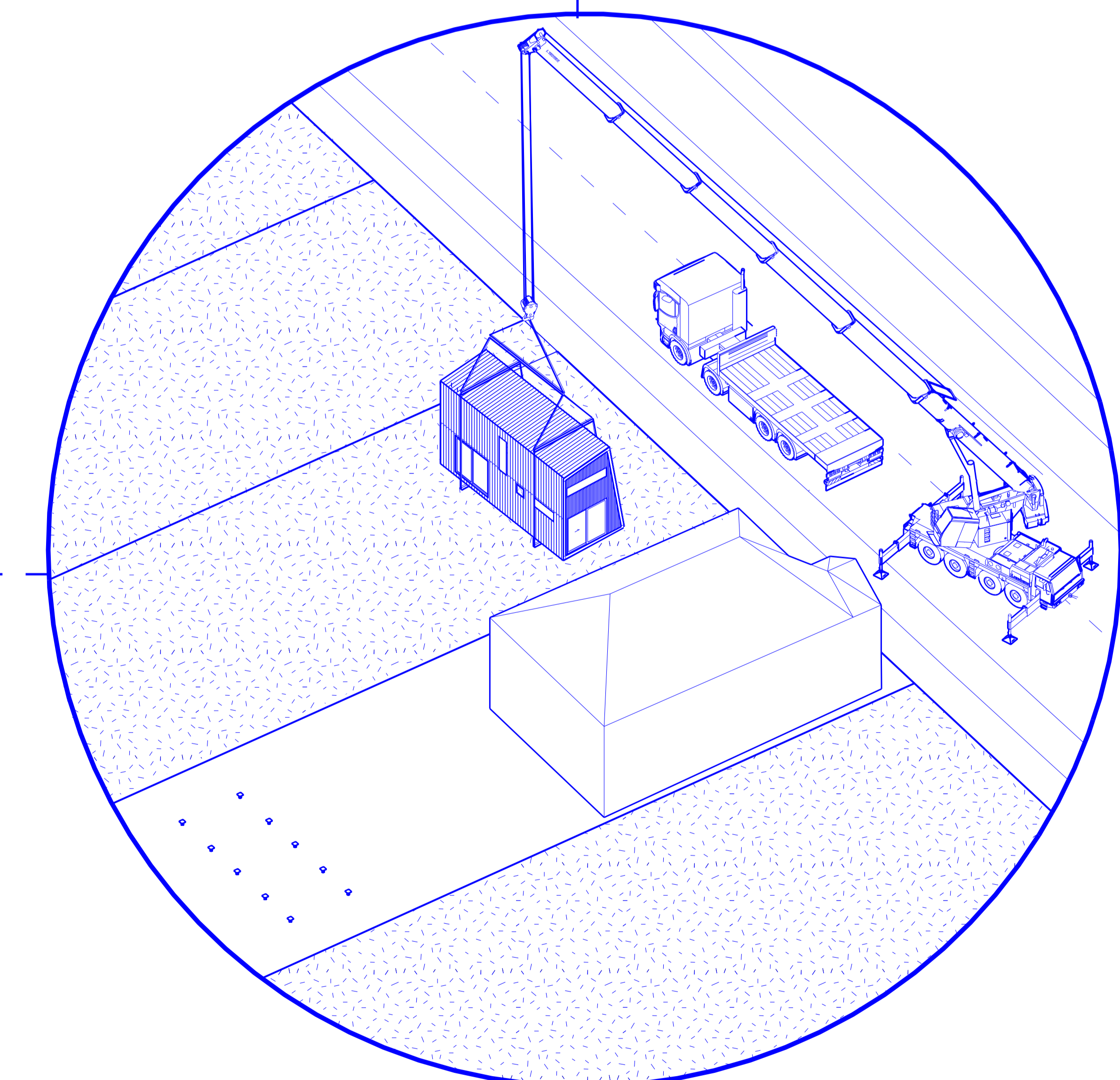
Delivery to site

Within allowable road transport dimensions, the fully-assembled FFF travels from factory to site on the back of a truck.



Delivery onto site

Assembly is as simple as 1-2-3:
Piles - crane - roof shout!



where can it go?



Available from September 2018 in 4 models to meet all of your needs. Transform your backyard this summer!

flipflopflap.co.nz

V3Y6