



OFF-SITE MANUFACTURE

- 2.4x4.8 Potius Floor Cassette systems - OSB / insulation / LVL composite
- 2.4x6.0 roof cassette systems - MDF / OSB / insulation / LVL composite
- 2.7x4.9 external wall cassette systems - MDF / OSB / insulation / LVL composite
- 2.4x2.8/2.9/4.8 internal wall cassette systems - MDF / OSB / insulation / LVL composite
- Prewrap and clad walls and roofs
- Install aluminum joinery
- Prewire wall and floor cassettes
- Pre plumb wall and floor cassettes

CONSTRUCTION PROCESS / METHODOLOGY

1. Foundation: piles / bearers
2. Install floor and deck cassettes : hi-ab into place, fix to bearers to NZS3604
3. Install internal and external wall cassettes: hi-ab into place, screw fix.
 - Screw trims over cladding junctions and glue fix others as required
4. Install roof cassettes: hi-ab into place, screw fix
 - Install ridge + barge flashings,
 - Install fascia and gutters
5. Install joinery glazing
6. Install external posts (optional)
7. Fit-out
 - Paint
 - Floor finishes
 - Joinery
 - Sanitary ware
 - Electrical

SITE SPECIFIC RESTRAINTS

- SNUG wall, floor and roof cassettes have the potential to be reduced in size to be maneuvered onto tight sections or manually erected, manual installation of the roof feasible with standard prefabricated truss construction
- Maximum width of any 1 cassette is 2.4m

CLADDING OPTIONS

- Board and batten: both timber and cementitious
- Colorsteel, cedar cladding

INTERIOR FINISHES

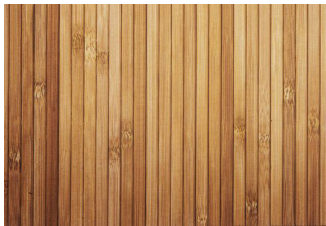
- Tiles / vinyl, black MDF, paint finishing MDF, plywood joinery and linings, engineered overlay flooring



Black MDF



OSB



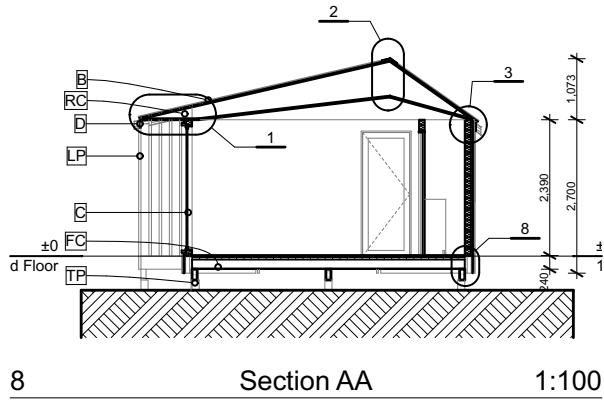
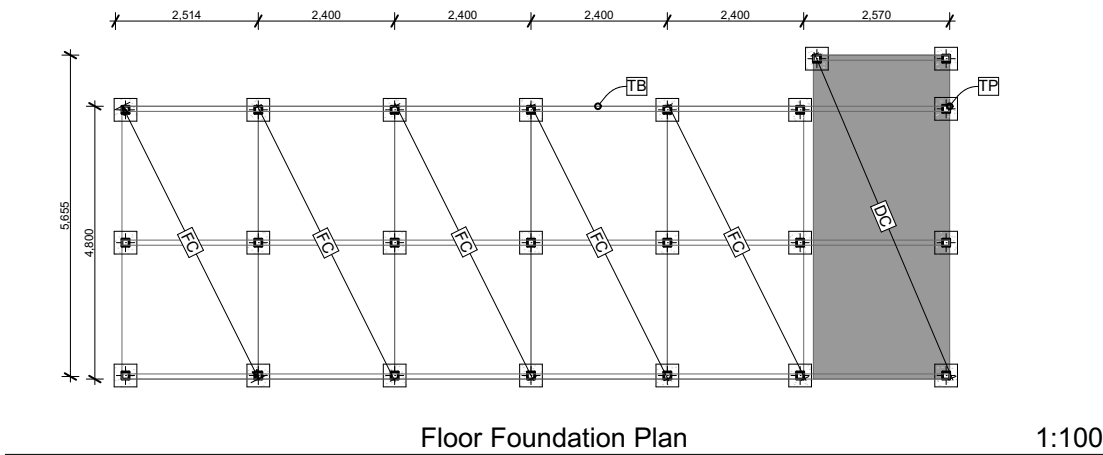
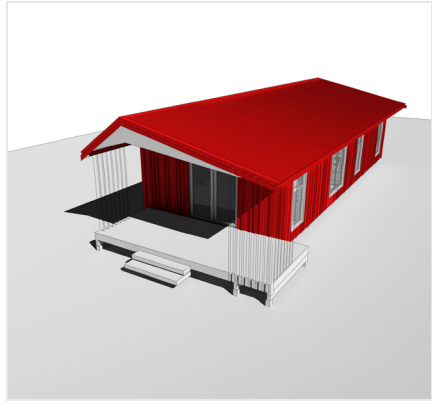
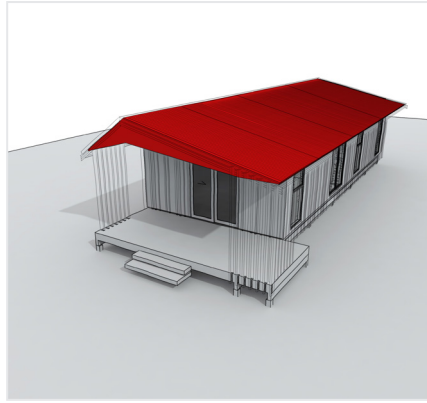
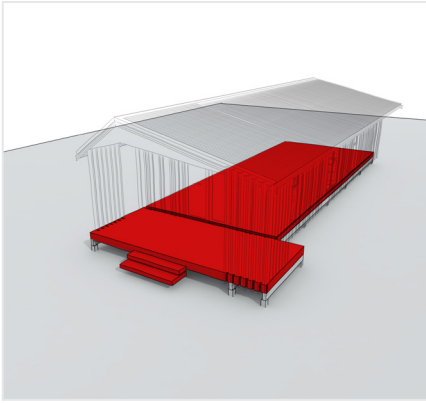
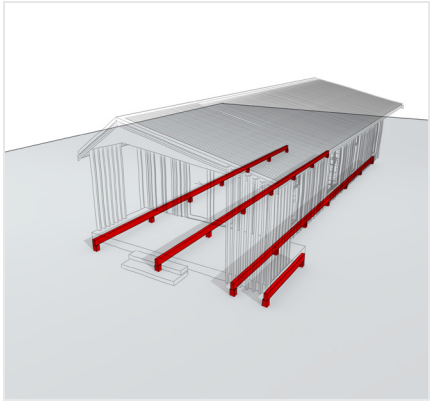
Cedar



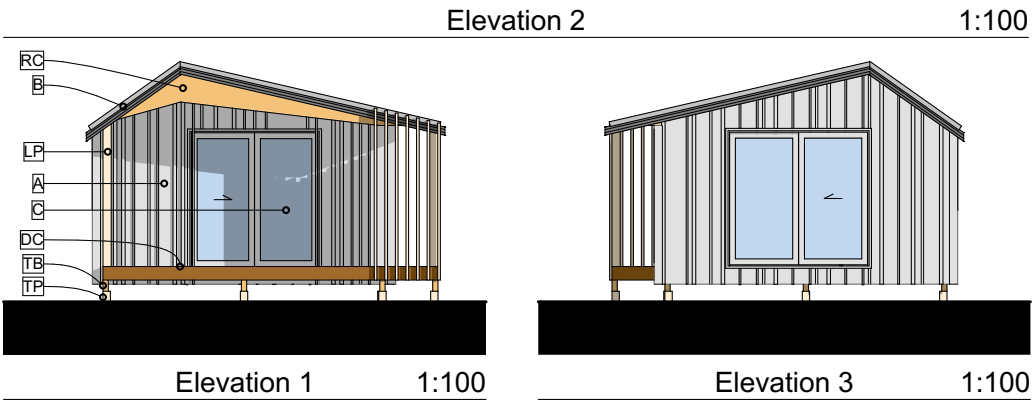
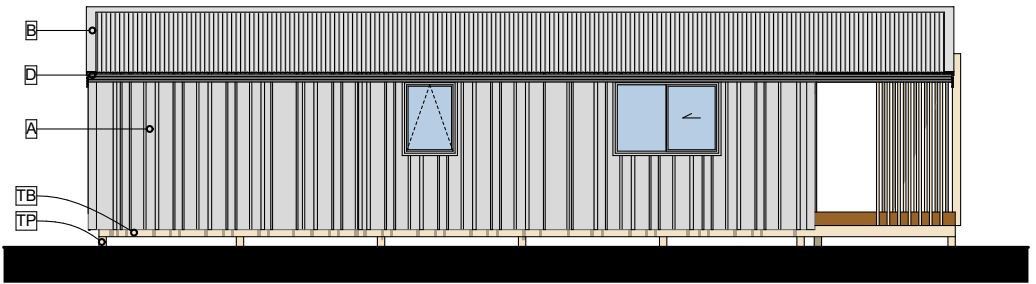
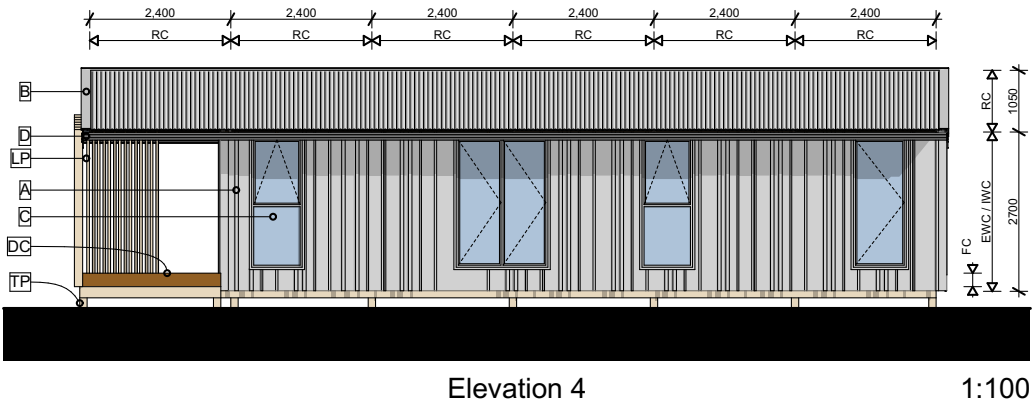
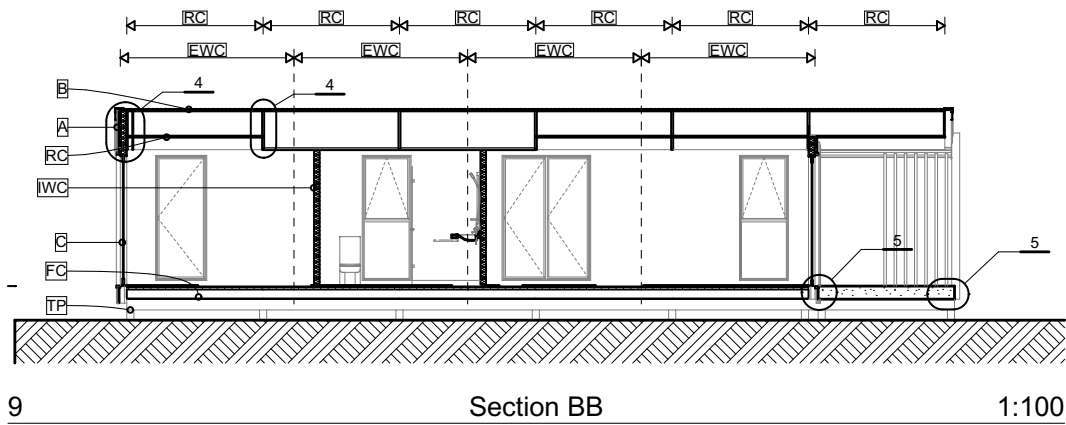
Plywood joinery

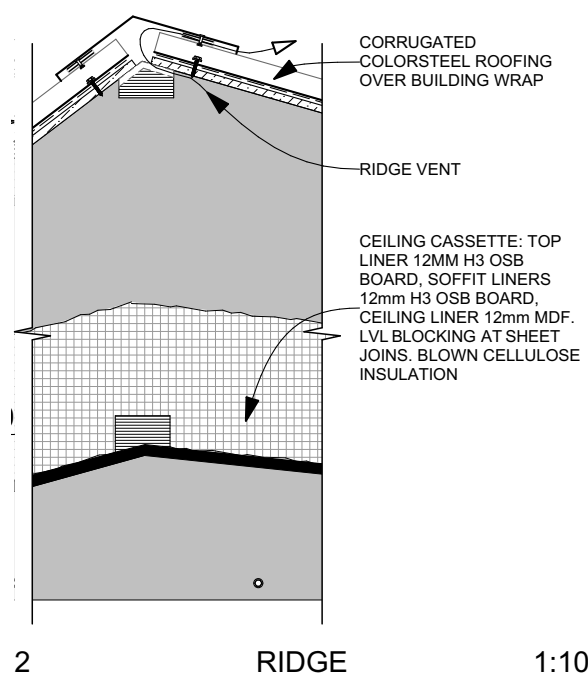
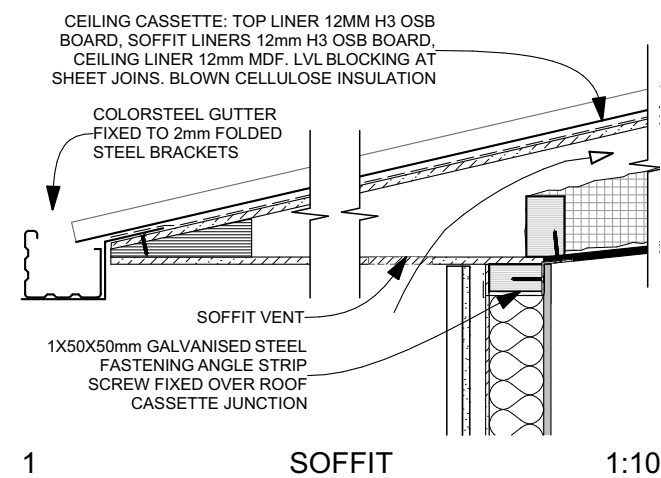


Colorsteel



| | |
|-----|---|
| IWC | Interior Wall Cassette |
| EWC | Exterior Wall Cassette |
| RC | Roof Cassette |
| FC | Floor Cassette |
| DC | Deck Cassette |
| LP | Laminated Post |
| TP | Timber Pile |
| TB | Timber Bearer |
| A | Fibre cement wall cladding with random profile battens |
| B | Corrugated colorsteel cladding and associated flashings |
| C | DG Powdercoated Aluminium joinery |
| D | Colorsteel gutter |



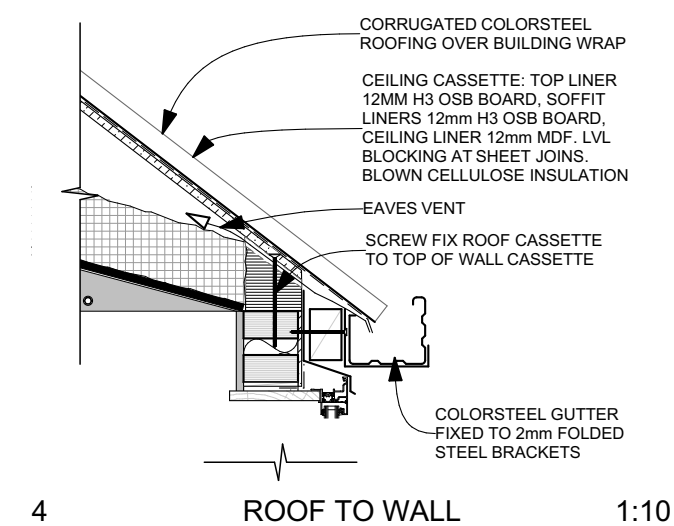
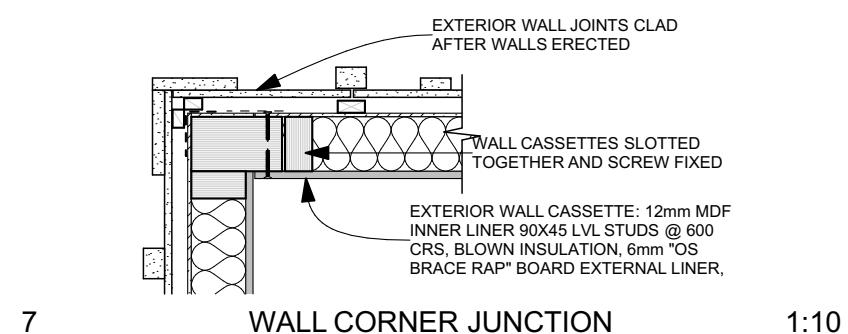
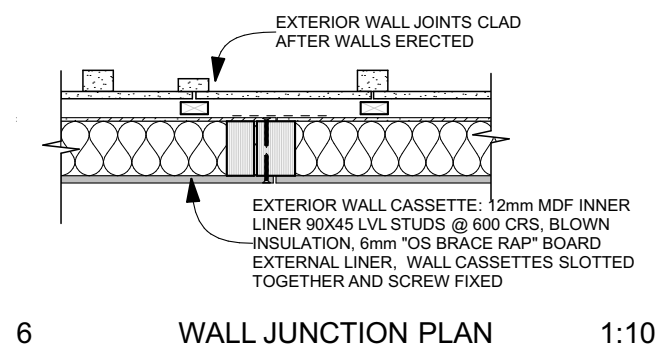
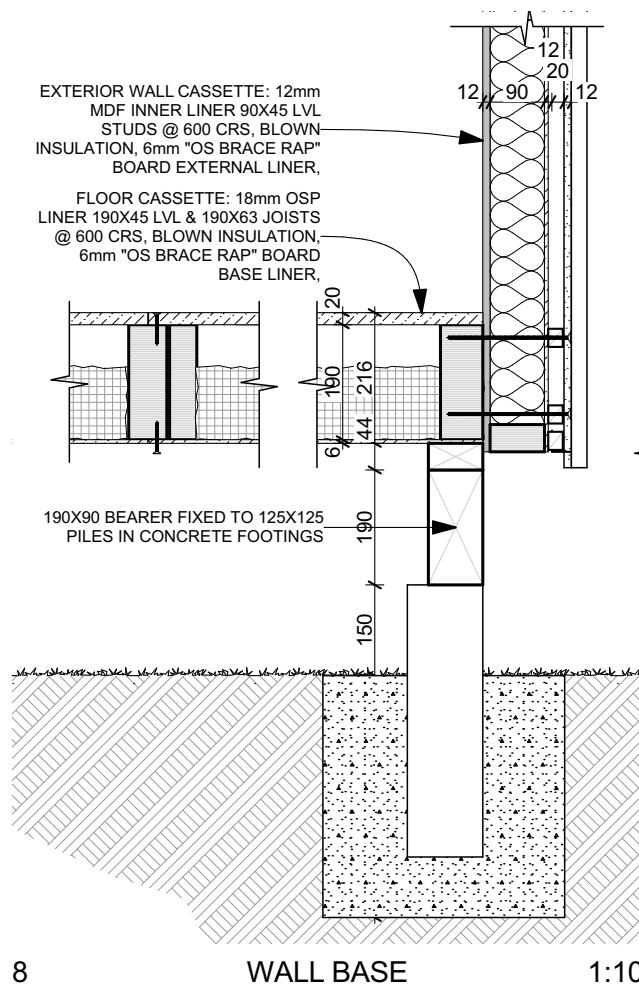
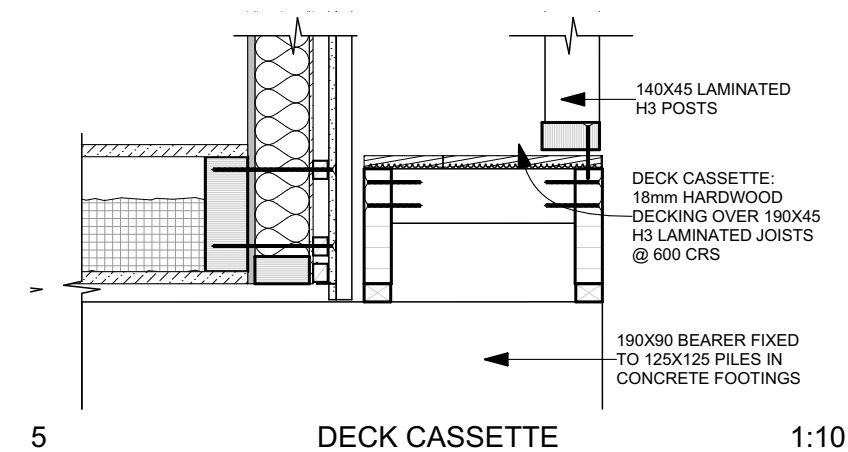
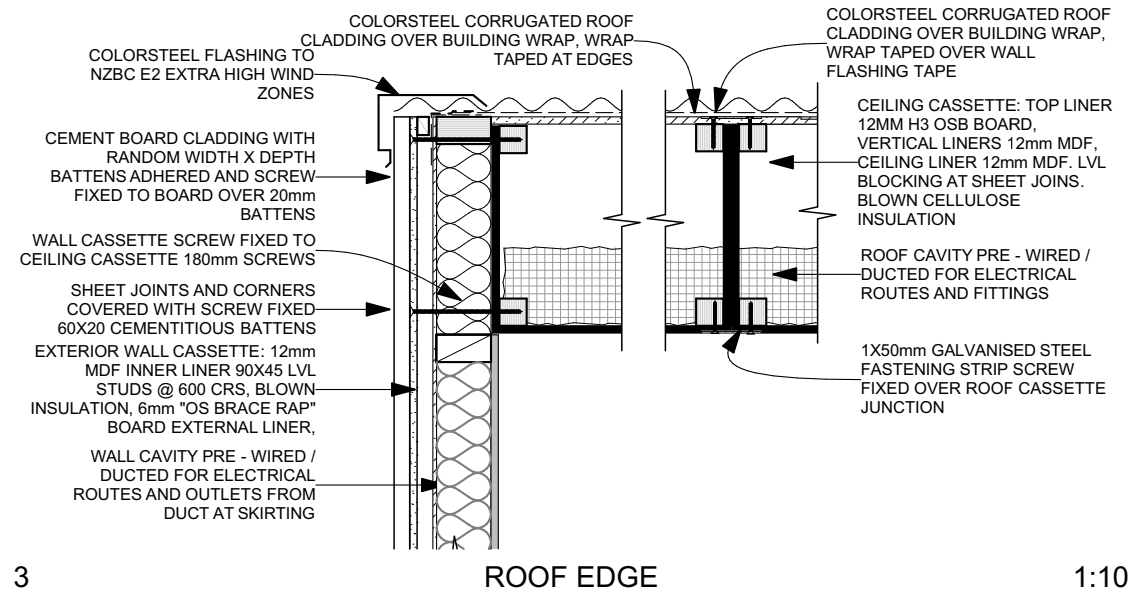


SERVICES

- 'PLUG AND PLAY' - SNUG to be pre-plumbed and wired to allow services to connect directly to underside of building
- Potential to accommodate:
 - Solar hot water
 - Internal battery power-pack
 - Void for aquacomb water tanks
 - UV filter externally mounted
- Ducted heat pump - contained within roof cassette over bathroom

LIFEMARK

The SNUG can accommodate all aspects of Lifemark Design Standards if required.



SEQUENCE KEY:

1. Sub-floor
2. Floor cassettes
3. Internal walls & services
4. External walls, pre-clad option
5. Roof cassettes
6. Roof cladding

